

State of Wyoming Corner Record

(In compliance with the *CORNER PERPETUATION AND FILING ACT*, Wyoming Statutes, 1977, Section 36-11-101, et. seq., and the Rules and Regulations of the Board of Registration for Professional Engineers and Professional Land Surveyors)

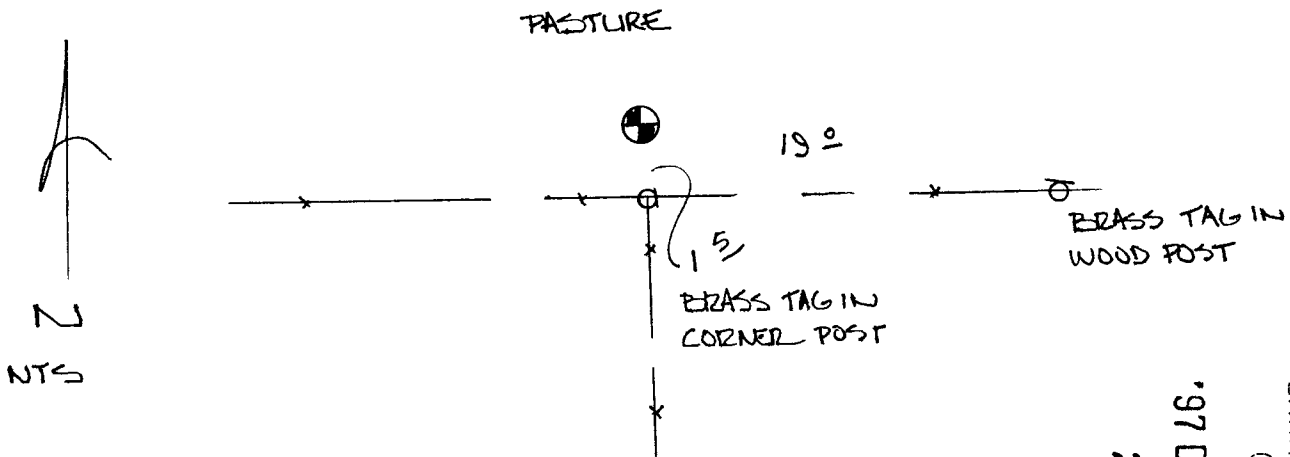
Reverse side of this form may be used if more space is needed.

Record of original survey and citation of source of historical information (if corner is lost or obliterated). Description of corner monumentation evidence found and/or monument and accessories established to perpetuate the location of this corner. Sketch of relative location of monument, accessories, and reference points with course and distance to adjacent corner(s) (if determined in this survey). Method and rationale for reestablishment of lost or obliterated corner.

ORIGINAL CALL:

SANDSTONE 15" x 8" x 5"

FOUND 2" x 8" SANDSTONE PROTRUDING 5" ABOVE GROUND.
 1/4 ON SOUTH FACE. STONE IS UPRIGHT AND FIRM IN THE
 GROUND. STONE IS 1' NORTH OF FENCE INTERSECTION.



215070

97 DEC 10 PM 12 06

LARAMIE COUNTY CLERK
CHEYENNE, WY.

Date of Field Work: 11-04-97 Office Reference: S10

CROSS INDEX DIAGRAM

Firm/Agency, Address

This corner record was prepared by me or under my direction and supervision.
SEAL & SIGNATURE

A	1	2	3	4	5	6	7	8	9	10	11	12	13	14	15	16	17	18	19	20	21	22	23	24	25
B																									
C		6		5		4		3		2		1													
D																									
E																									
F																									
G		7		8		9		10		11		12													
H																									
J																									
K																									
L		18		17		16		15		14		13													
M																									
N																									
O																									
P		19		20		21		22		23		24													
Q																									
R																									
S																									
T		30		29		28		27		26		25													
U																									
V																									
W																									
X		31		32		33		34		35		36													
Y																									
Z	1	2	3	4	5	6	7	8	9	10	11	12	13	14	15	16	17	18	19	20	21	22	23	24	25

JOHN B GUYTON
GEOSURV INC
520 STACY COURT STE B
LAFAYETTE CO 80026
 Telephone Number: 303 666 0379



Corner Name: 1/4 CORNER Section: 21 T 15N R 63W: 6 P.M. Cross-Index No.: R-11
 SBRPEPLS/PLSW: March 1994 **BOOK 1467**